

QUARTERFINAL ROUND

Male

vs.

Shelby Co.

March 19, 1993

Official Boxscore *** FINAL ***

Date: 03-19-93 Site:BOYS STATE TOURNEY GM 12

VISITORS (Last Name, First)

NO.	SHELBY COUNTY	Tot FG		3-POINT		FT	FTA	Rebounds			PF	TP	A	TO	BLK	S	TIME
		FG	FGA	FG	FGA			OFF	DEF	TOT							
20	McKNIGHT, DWAN	1	4	0	1	1	2	1	1	2	3	3	0	1	0	0	32:00
24	ALLEN, MONTAS	1	6	0	0	0	0	4	0	4	3	2	1	3	0	1	28:51
42	SIMONS, MATT	6	9	0	0	1	2	0	13	13	5	13	0	1	0	0	28:00
14	BURCHFIELD, J.	9	18	2	8	0	1	2	3	5	3	20	4	1	0	0	32:00
22	HOFFETT, JOHN	3	11	1	3	8	8	0	4	4	1	15	1	4	0	0	32:00
33	LONG, JEFF	0	0	0	0	0	0	0	2	2	4	0	0	0	0	1	5:44
12	RICE, JASON	0	1	0	0	1	0	0	0	0	0	0	0	0	0	0	1:03
32	MACKAY, JOHN	0	0	0	0	0	0	0	0	0	0	0	0	0	0	0	0:22
TEAM REBOUNDS (INCLUDED IN TOTALS)								1	1	2	2			1			
TOTALS		20	49	3	13	10	13	8	23	31	21	53	7	13	1	2	160
TOTAL FG 1st HALF		6/12	50.0%	2nd HALF		14/37	37.8% GAME			20/49		40.8%	DEADBALL				
3-POINT FG 1st HALF		1/2	50.0%	2nd HALF		2/11	18.2% GAME			3/13		23.1%	REBOUNDS		3		
FREE THROWS 1st HALF		2/4	50.0%	2nd HALF		8/9	88.9% GAME			10/13		76.9%					

HOME (Last Name, First)

NO.	MALE	Tot FG		3-POINT		FT	FTA	Rebounds			PF	TP	A	TO	BLK	S	TIME
		FG	FGA	FG	FGA			OFF	DEF	TOT							
11	WORDLOW, ANTUAN	4	8	0	0	0	0	0	2	2	2	8	1	0	0	0	20:31
50	MARTIN, DAVID	1	4	0	0	3	4	0	2	2	1	5	0	0	0	1	28:10
25	OSBORNE, JASON	10	19	1	2	11	15	7	9	16	4	32	5	2	4	4	31:38
22	EDELEN, DANNY	0	4	0	3	0	1	1	3	4	3	0	6	5	0	0	29:38
32	SHEE, DAVID	5	11	3	7	2	3	2	5	7	2	15	2	1	0	1	32:00
55	MOORE, DAMON	0	2	0	0	0	0	1	0	1	0	0	0	0	0	0	3:50
20	BIBB, DON	4	5	1	2	1	1	0	0	0	2	10	1	0	0	2	12:02
52	GIVENS, NATE	0	0	0	0	0	0	0	0	0	0	0	0	0	0	0	1:24
14	GRAHAM, TONY	0	0	0	0	0	0	0	0	0	0	0	0	1	0	0	0:25
45	BUNTON, B. J.	1	1	0	0	0	0	0	0	0	0	2	0	0	0	0	0:22
TEAM REBOUNDS (INCLUDED IN TOTALS)								11	21	32	14	72	15	9	4	8	160
TOTALS		25	54	5	14	17	24	11	21	32	14	72	15	9	4	8	160
TOTAL FG 1st HALF		7/13	53.8%	2nd HALF		18/41	43.9% GAME			25/54		46.3%	DEADBALL				
3-POINT FG 1st HALF		1/5	20.0%	2nd HALF		4/9	44.4% GAME			5/14		35.7%	Rebounds		2		
FREE THROWS 1st HALF		0/1	0.0%	2nd HALF		17/23	73.9% GAME			17/24		70.8%					

OFFICIALS: YVON ALLEN, MONDO ANGELUCCI, ALT-R. SPALDING

SCORE BY PERIODS					
SHELBY COUNTY	15	13	12	13	= 53
MALE	15	13	12	32	= 72

Attendance: 15,950

COMMENTS: POINTS OFF TURNOVERS
SHELBY COUNTY 12 MALE

22 SHELBY COUNTY SECOND CHANCE POINTS
6 MALE

8

Produced by the KHSAA Sweet Sixteen Stat Crew with FINAL III - a Product of LEXICON SPORTS™

SHELBY COUNTY "ROCKETS" vs MALE "BULLDOGS"
1st Half Play by Play

PAGE : 2

Tip off at 9:00 p.m. on 03/19/93 at BOYS STATE TOURNEY GM 12
Produced by the KHSAA Sweet Sixteen Stat Crew with FINAL III - a Product of LEXICO

Player	Team	MALE	Time	Score	SHELBY COUNTY	Player	Team
WORDLOW, ANTUAN, OSBORNE, JASON	EDELEN, DANNY, SHEE, DAVID, MOORE, DAMON	Ball to BULLDOGS			McKNIGHT, DWAN, ALLEN, MONTAS, SIMONS, MATT, BURCHFIELD, J., MOFFETT, JOHN		
2-3	66.6% 8-14 57.1%	12 ft Lane Jump shot by WORDLOW, ANTUAN	2 7:43	*17-15			
			2 7:07	17-17*	12 ft Left Side Jump shot by BURCHFIELD, J.	4-4	100% 7-13 53.8%
			2 6:10		Technical foul on SHELBY COUNTY BENCH		
1-3	33.3% 1-3 33.3%	OSBORNE, JASON, 2 Free Throws missed 1st made 2nd	2 6:10	*18-17			
			2 5:43	18-19*	13 ft Left Angle Jump shot by BURCHFIELD, J.	5-5	100% 8-15 53.3%
5-8	62.5% 9-22 40.9%	Follow Layup by OSBORNE, JASON	2 5:27	*20-19			
			2 5:05		Foul on ALLEN, MONTAS	1	2
		Sub In: MARTIN, DAVID Out: MOORE, DAMON	2 5:05				
		Sub In: BIBB, DON Out: WORDLOW, ANTUAN					
6-9	66.6% 10-24 41.6%	3 pt 22 ft Right Angle Jump shot by OSBORNE, JASON	2 4:13	*23-19			
			2 3:49	23-21*	9 ft Right Side Turnaround by SIMONS, MATT Assist by BURCHFIELD, J.	3-5	60.0% 9-17 52.9%
						3	4
7-10	70.0% 11-26 42.3%	Alley Oop Dunk by OSBORNE, JASON Assist by BIBB, DON	2 3:17	*25-21			
1	5						
1-2	50.0% 12-28 42.8%	9 ft Left Side Jump shot by BIBB, DON Assist by OSBORNE, JASON	2 2:03		Foul on ALLEN, MONTAS	2	3
2	6		2 1:58	*27-21			
2	4	Foul on EDELEN, DANNY					
1	5	Foul on BIBB, DON	2 1:34				
		Sub In: GIVENS, NATE Out: EDELEN, DANNY	2 1:24				
			2 1:24				
			2 1:24				
			2 1:24	27-23*	MOFFETT, JOHN, 2 Free Throws made both	2-2	100% 4-6 66.6%
			2 0:45	27-25*	12 ft Lane Jump shot by ALLEN, MONTAS	1-2	50.0% 10-20 50.0%
			2 0:10		Foul on SIMONS, MATT	2	4
1-1	100% 2-4 50.0%	MARTIN, DAVID, 1 Free Throw made	2 0:10	*28-25			
1-2	50.0% 2-5 40.0%	MARTIN, DAVID, 1 Free Throw missed	2 0:09				
			2 0:00	28-28*	3 pt 20 ft Circle Jump shot by BURCHFIELD, J., made	6-8	75.0% 11-21 52.3%

Official Boxscore * OFFICIAL FIRST HALF *

Date: 03-19-93 Site:BOYS STATE TOURNEY GM 12

VISITORS (Last Name, First)

NO.	SHELBY COUNTY	Tot FG		3-POINT		FT	FTA	Rebounds			PF	TP	A	TO	BLK	S	TIME
		FG	FGA	FG	FGA			OFF	DEF	TOT							
20	MCKNIGHT, DWAN	0	1	0	0	1	2	0	0	0	0	1	0	0	0	16:00	
24	ALLEN, MONTAS	1	2	0	0	0	0	1	0	1	2	2	1	2	0	16:00	
42	SIMONS, MATT	3	5	0	0	1	2	0	10	10	2	7	0	0	0	16:00	
14	BURCHFIELD, J.	6	8	2	3	0	0	0	2	2	0	14	3	0	0	16:00	
22	MOFFETT, JOHN	1	5	0	1	2	2	0	1	1	0	4	0	3	0	16:00	
TEAM REBOUNDS (INCLUDED IN TOTALS)								1	13	14	5	28	4	6	0	1	80
TOTALS		11	21	2	4	4	6	1	13	14	5	28	4	6	0	1	80
TOTAL FG	1st HALF	6/12	50.0%	2nd HALF	5/9	55.6%	GAME		11/21	52.4%	DEADBALL						
3-POINT FG	1st HALF	1/2	50.0%	2nd HALF	1/2	50.0%	GAME		2/4	50.0%	REBOUNDS						3
FREE THROWS	1st HALF	2/4	50.0%	2nd HALF	2/2	100.0%	GAME		4/6	66.7%							

HOME (Last Name, First)

NO.	MALE	Tot FG		3-POINT		FT	FTA	Rebounds			PF	TP	A	TO	BLK	S	TIME
		FG	FGA	FG	FGA			OFF	DEF	TOT							
11	WORDLOW, ANTUAN	2	5	0	0	0	0	0	1	1	1	4	0	0	0	0	10:55
50	MARTIN, DAVID	1	2	0	0	1	2	0	0	0	1	3	0	0	0	1	12:10
25	OSBORNE, JASON	7	12	1	1	1	3	5	4	9	0	16	2	1	1	3	16:00
22	EDELEN, DANNY	0	2	0	2	0	0	0	2	2	2	0	3	3	0	0	14:36
32	SHEE, DAVID	1	4	1	4	0	0	0	1	1	0	3	0	0	0	0	16:00
55	MOORE, DAMON	0	2	0	0	0	0	0	1	1	0	0	0	0	0	0	3:50
20	BIBB, DON	1	2	0	1	0	0	0	0	0	1	2	1	0	0	0	5:05
52	GIVENS, NATE	0	0	0	0	0	0	0	0	0	0	0	0	0	0	0	1:24
TEAM REBOUNDS (INCLUDED IN TOTALS)								6	8	14	5	28	6	4	1	4	80
TOTALS		12	29	2	8	2	5	6	8	14	5	28	6	4	1	4	80
TOTAL FG	1st HALF	7/13	53.8%	2nd HALF	5/16	31.3%	GAME		12/29	41.4%	DEADBALL						
3-POINT FG	1st HALF	1/5	20.0%	2nd HALF	1/3	33.3%	GAME		2/8	25.0%	Rebounds						1
FREE THROWS	1st HALF	0/1	0.0%	2nd HALF	2/4	50.0%	GAME		2/5	40.0%							

OFFICIALS: YVON ALLEN, MONDO ANGELUCCI, ALT-R. SPALDING

Technical: SHELBY COUNTY Bench - 1;

SCORE BY PERIODS			
SHELBY COUNTY	15	13	= 28
MALE	15	13	= 28

Attendance: 15,950

COMMENTS: POINTS OFF TURNOVERS

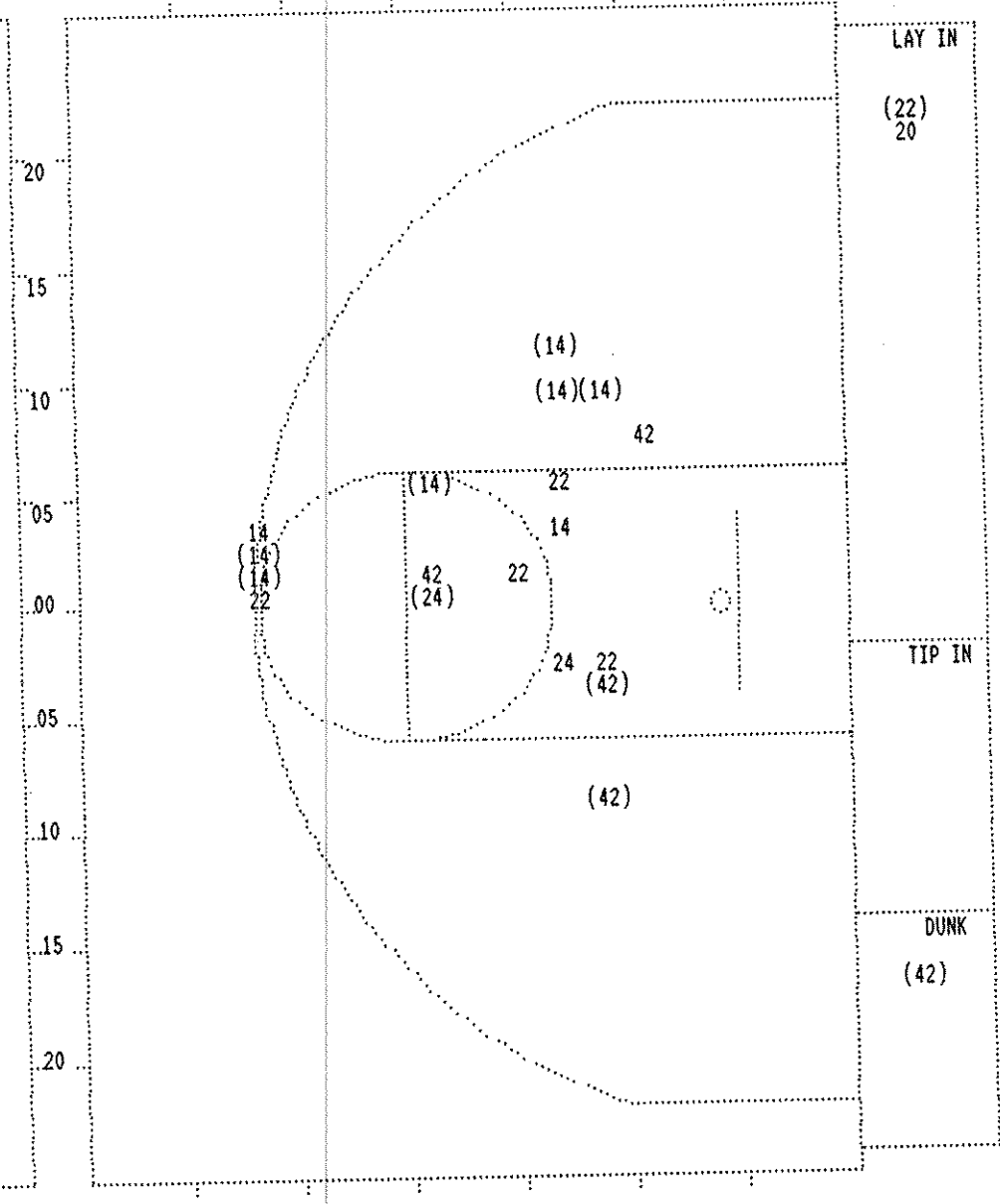
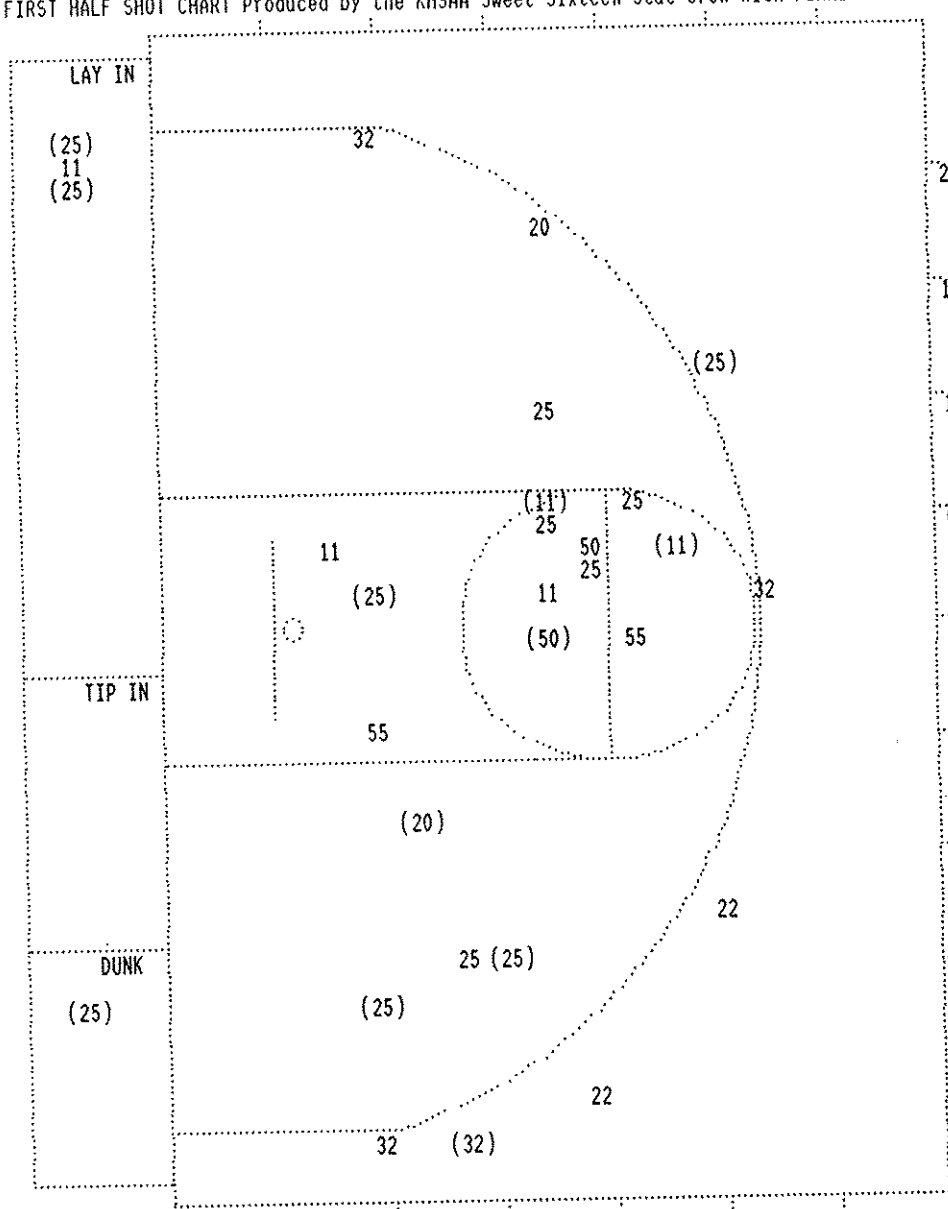
SHELBY COUNTY 3 MALE

10 SHELBY COUNTY

SECOND CHANCE POINTS

0 MALE

Produced by the KHSAA Sweet Sixteen Stat Crew with FINAL III - a Product of LEXICON SPORTS™



MALE				
Player		Player		Player
11 - WORDLOW, A	2 / 5 40.0%	20 - BIBB, DON	1 / 2 50.0%	
50 - MARTIN, DA	1 / 2 50.0%	55 - MOORE, DAM	0 / 2 0.0%	
25 - OSBORNE, J	7 / 12 58.3%			
22 - EDELEN, DA	0 / 2 0.0%			
32 - SHEE, DAVI	1 / 4 25.0%			
Layups	1-9 Ft	10-15 Ft	Over 15 Ft	3 Pointers Total
3 / 4	2 / 4	2 / 10	3 / 3	2 / 8 12 / 29
75.0%	50.0%	20.0%	100.0%	25.0% 41.4%

SHELBY COUNTY				
Player		Player		Player
20 - McKNIGHT,	0 / 1 0.0%			
24 - ALLEN, MON	1 / 2 50.0%			
42 - SIMONS, MA	3 / 5 60.0%			
14 - BURCHFIELD	6 / 8 75.0%			
22 - MOFFETT, J	1 / 5 20.0%			
Layups	1-9 Ft	10-15 Ft	Over 15 Ft	3 Pointers Total
2 / 3	2 / 8	5 / 6	2 / 4	11 / 21
66.7%	25.0%	83.3%	50.0%	52.4%

SHELBY COUNTY "ROCKETS" vs MALE "BULLDOGS"
2nd Half Play by Play

Tip off at 9:00 p.m. on 03/19/93 at BOYS STATE TOURNEY GM 12
Produced by the KHSAA Sweet Sixteen Stat Crew with FINAL III - a Product of LEXI

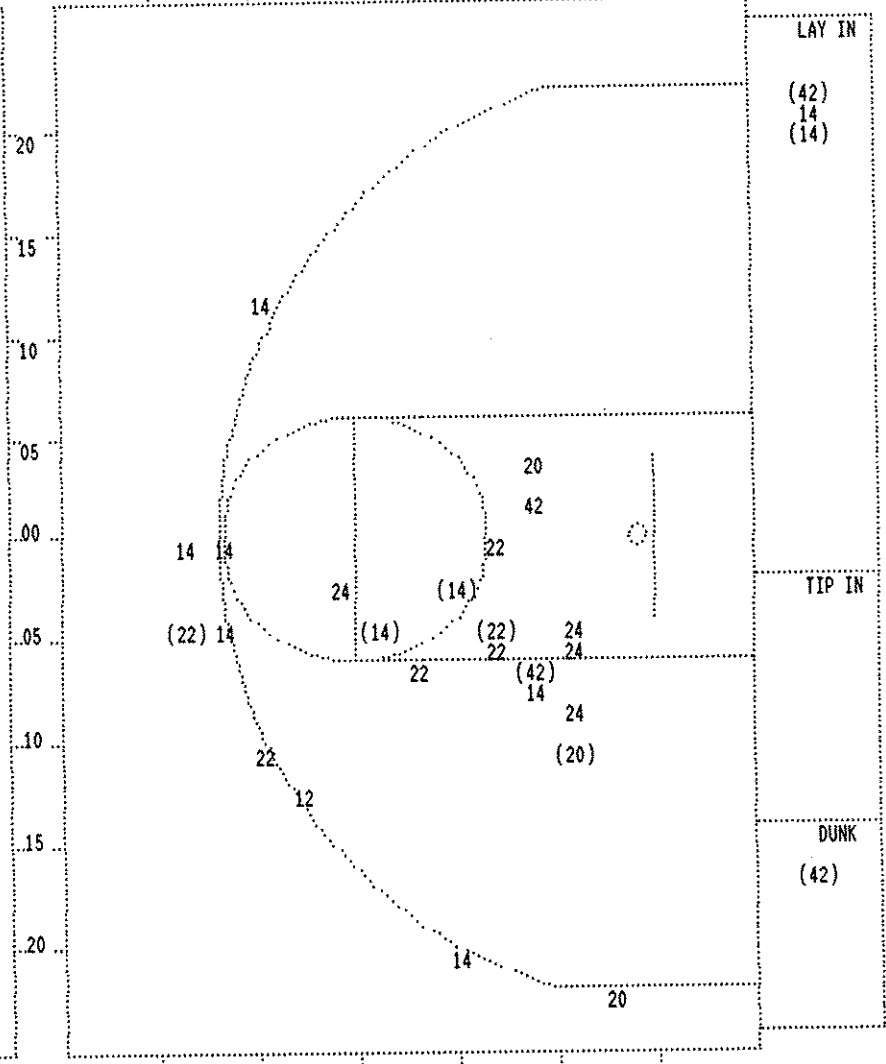
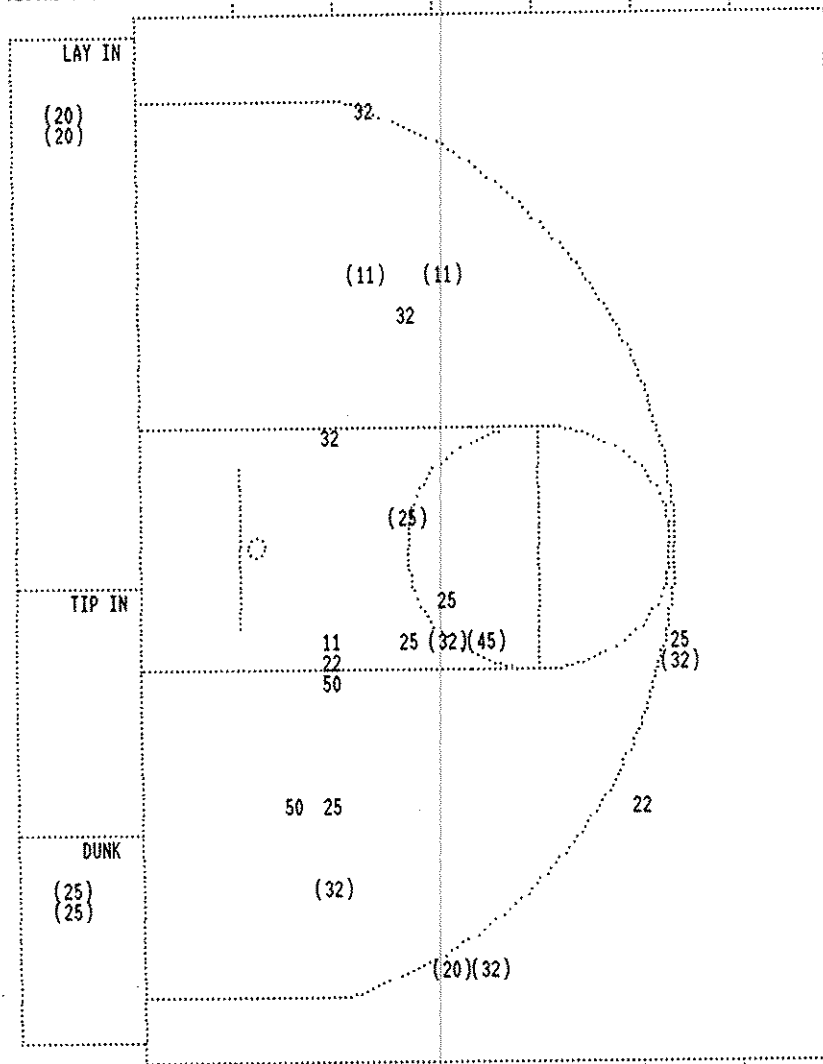
PAGE : 1

Player	Team	MALE
WORDLOW, ANTUAN, MARTIN, DAVID, OSBORNE, JASON, EDELEN, DANNY, SHEE, DAVID		
2-5	40.0%	13-30 43.3%
1	7	9 ft Lane Jump shot by SHEE, DAVID Assist by WORDLOW, ANTUAN
1	1	Foul on OSBORNE, JASON
3-8	37.5%	14-37 37.8%
4	8	3 pt 20 ft Circle Jump shot by SHEE, DAVID Assist by EDELEN, DANNY
3	2	Foul on EDELEN, DANNY
REB: 19 A: 8 BLK: 2 TO: 6 PF: 2 S: 6 FT: 2-5 40.0% FG: 14-37 37.8%		
3-7	42.8%	15-39 38.4%
3	9	15 ft Right Side Jump shot by WORDLOW, ANTUAN Assist by OSBORNE, JASON
4-8	50.0%	16-40 40.0%
16 ft Right Side Jump shot by WORDLOW, ANTUAN		
Sub In: BIBB, DON Out: EDELEN, DANNY		
4-9	44.4%	17-41 41.4%
4	10	3 pt 22 ft Left Side Jump shot by SHEE, DAVID Assist by OSBORNE, JASON
2	3	Foul on OSBORNE, JASON Sub In: GRAHAM, TONY Out: WORDLOW, ANTUAN

Time	Score	SHELBY COUNTY	Player	Team
McKNIGHT, DWAN, ALLEN, MONTAS, SIMONS, MATT, BURCHFIELD, J., MOFFETT, JOHN				
Ball to ROCKETS				
3	7:32	*30-28		
3	6:25	30-30*	Alley Oop Layup by SIMONS, MATT Assist by BURCHFIELD, J.	4-6 66.6% 12-23 52.1%
3	4:13		Foul on BURCHFIELD, J.	4 5 1 1
3	4:03			
3	3:33	30-32*	10 ft Right Side Jump shot by McKNIGHT, DWAN	1-3 33.3% 13-28 46.4%
3	3:22		Foul on ALLEN, MONTAS	3 2
3	3:08	*33-32		
3	2:52			
3	2:36	33-34*	Alley Oop Dunk by SIMONS, MATT Assist by MOFFETT, JOHN	5-7 71.4% 14-30 46.6%
				1 6
3	2:24			
REB: 22 A: 6 BLK: 0 TO: 9 PF: 2 S: 1 FT: 4-6 66.6% FG: 14-31 45.1%				
No. 1 MALE TIME - O U T				
3	1:36	*35-34		
3	1:13	*37-34		
3	0:58	37-36*	13 ft Lane Jump shot by BURCHFIELD, J.	7-12 58.3% 15-35 42.8%
3	0:58			
3	0:58	*40-36		
3	0:25			
3	0:25			
3	0:25	40-38*	MOFFETT, JOHN, 2 Free Throws made both	4-4 100% 6-8 75.0%
3	0:25		Sub In: LONG, JEFF Out: ALLEN, MONTAS	
3	0:00	40-40*	7 ft Lane Jump shot by MOFFETT, JOHN	2-7 28.5% 16-36 44.4%

Player	Team	MALE	Time	Score	SHELBY COUNTY	Player	Team
WORDLOW, ANTUAN, MARTIN, DAVID, OSBORNE, JASON, EDELEN, DANNY, SHEE, DAVID			LONG, JEFF, SIMONS, MATT, MOFFETT, JOHN, MCKNIGHT, DWAN, BURCHFIELD, J.				
Ball to BULLDOGS			4 7:43		Foul on SIMONS, MATT	3	3
3-4	75.0%	4-7 57.1%	4 7:43	*42-40			
2		4	4 7:42				
MARTIN, DAVID, 2 Free Throws made both			4 7:41	42-42*	7 ft Lane Bank by SIMONS, MATT	6-9	66.6%
Foul on WORDLOW, ANTUAN			4 7:05		Assist by LONG, JEFF	1	17-37 45.9%
			4 7:05		Foul on LONG, JEFF	1	7
			4 7:05		Sub In: ALLEN, MONTAS Out: LONG, JEFF		4
8-15	53.3%	18-42 42.8%	4 7:05	*44-42			
5		11	4 6:30	44-44*	Driving Layup by BURCHFIELD, J.	8-13	61.5%
6 ft Lane Jump shot by OSBORNE, JASON			4 6:06				
Assist by EDELEN, DANNY			4 6:00				
3		5	4 5:59				
4		6	4 5:59	44-46*	MOFFETT, JOHN, 2 Free Throws made both	6-6	100%
Foul on OSBORNE, JASON			4 5:46	*46-46			8-10 80.0%
Foul on OSBORNE, JASON			4 4:46		Foul on SIMONS, MATT	4	5
Sub In: BIBB, DON Out: WORDLOW, ANTUAN			4 4:46	*48-46			
5-10	50.0%	19-44 43.1%	4 4:46		Sub In: LONG, JEFF Out: ALLEN, MONTAS		
3-5	60.0%	6-9 66.6%	4 4:37	*50-46			
OSBORNE, JASON, 2 Free Throws made both			4 4:37		Foul on MCKNIGHT, DWAN	1	6
9-17	52.9%	20-46 43.4%	4 4:37				
1		12	4 4:37				
Dunk Off Fast Break by OSBORNE, JASON			4 4:37				
Assist by SHEE, DAVID			4 4:37				
REB: 23 A: 12 BLK: 3 TO: 7 PF: 6			4 4:37				
S: 7 FT: 6-9 66.6% FG: 20-46 43.4%			TIME - O U T		SHELBY COUNTY No. 1	REB: 25 A: 7 BLK: 0 TO: 10 PF: 6	
			4 4:37			S: 2 FT: 8-10 80.0% FG: 18-39 46.1%	
3-6	50.0%	6-10 60.0%	4 4:23		Foul on LONG, JEFF	2	7
OSBORNE, JASON, 1 Free Throw missed			4 4:11		Foul on LONG, JEFF	3	8
5-8	62.5%	8-12 66.6%	4 4:11	*52-46			
OSBORNE, JASON, 2 Free Throws made both			4 4:00		Technical foul on SIMONS, MATT		
6-10	60.0%	9-14 64.2%	4 4:00	*53-46			
2-3	66.6%	21-47 44.6%	4 4:00	*56-46			
2		7	4 3:50		Sub In: ALLEN, MONTAS Out: SIMONS, MATT		
OSBORNE, JASON, 2 Free Throws made 1st missed 2nd			4 3:39				
3 pt 22 ft Left Side Jump shot by BIBB, DON			4 3:37		BURCHFIELD, J., 1 & Bonus missed 1st	0-1	00.0%
Foul on BIBB, DON			4 3:13				8-11 72.7%
1		8	4 3:00	*56-46*	8 ft Lane Follow by BURCHFIELD, J.	9-15	60.0%
Foul on SHEE, DAVID			4 2:42		Foul on BURCHFIELD, J.	2	19-41 46.3%
REB: 26 A: 12 BLK: 4 TO: 8 PF: 8			4 2:42				
S: 7 FT: 9-14 64.2% FG: 21-49 42.8%			TIME - O U T		SHELBY COUNTY No. 2	REB: 27 A: 7 BLK: 1 TO: 12 PF: 9	
			4 2:42			S: 2 FT: 8-11 72.7% FG: 19-41 46.3%	
0-1	00.0%	9-15 60.0%	4 2:08	*58-48			
3-4	75.0%	22-51 43.1%	4 2:03				
2		9	4 2:03	58-50*	MOFFETT, JOHN, 1 & Bonus made both	8-8	100%
EDELEN, DANNY, 1 & Bonus missed 1st			4 2:03				
Layup Off Fast Break by BIBB, DON			4 2:03				
Foul on SHEE, DAVID			4 2:03				
REB: 27 A: 12 BLK: 4 TO: 8 PF: 9			4 2:03				
S: 8 FT: 9-15 60.0% FG: 22-51 43.1%			TIME - O U T		SHELBY COUNTY No. 3	REB: 29 A: 7 BLK: 1 TO: 13 PF: 9	
			4 1:47			S: 2 FT: 10-13 76.9% FG: 19-42 45.2%	
0-1	00.0%	9-16 56.2%	4 1:46		Foul on MCKNIGHT, DWAN	2	10
SHEE, DAVID, 1 & Bonus missed 1st			4 1:12	58-53*	3 pt 22 ft Straight Away Jump shot by MOFFETT, JOHN	3-10	30.0%
REB: 28 A: 12 BLK: 4 TO: 9 PF: 9			4 1:12				20-44 45.4%
S: 8 FT: 9-16 56.2% FG: 22-51 43.1%			TIME - O U T		SHELBY COUNTY No. 4	REB: 30 A: 7 BLK: 1 TO: 13 PF: 10	
			4 1:03			S: 2 FT: 10-13 76.9% FG: 20-44 45.4%	
2-3	66.6%	11-18 61.1%	4 1:03	*60-53			
SHEE, DAVID, 1 & Bonus made both			4 1:03		Foul on MCKNIGHT, DWAN	3	11
4-5	80.0%	23-52 44.2%	4 0:45	*62-53			
5		13	4 0:45		Sub In: RICE, JASON Out: ALLEN, MONTAS		
Layup Off Fast Break by BIBB, DON			4 0:45				
Assist by OSBORNE, JASON			4 0:45		Foul on LONG, JEFF	4	12
1-1	100%	12-19 63.1%	4 0:45	*63-53			
10-19	52.6%	24-53 45.2%	4 0:30	*65-53			
2		14	4 0:30		Foul on MOFFETT, JOHN	1	13
BIBB, DON, 1 Free Throw made			4 0:30	*66-53			
Dunk Off Fast Break by OSBORNE, JASON			4 0:22		Foul on BURCHFIELD, J.	3	14
Assist by SHEE, DAVID			4 0:22		Technical foul on SHELBY COUNTY BENCH		
7-11	63.6%	13-20 65.0%	4 0:22	*68-53			
OSBORNE, JASON, 1 Free Throw made			4 0:22	*70-53			
9-13	69.2%	15-22 68.1%	4 0:22				
11-15	73.3%	17-24 70.8%	4 0:22				
OSBORNE, JASON, 2 Shot Intentional made both			4 0:22		Sub In: MACKAY, JOHN Out: LONG, JEFF		
OSBORNE, JASON, 2 Free Throws made both			4 0:22				
Sub In: BUNTON, B. J. Out: OSBORNE, JASON			4 0:18	*72-53			
1-1	100%	25-54 46.2%	4 0:18				
6		15					
11 ft Lane Jump shot by BUNTON, B. J.							
Assist by EDELEN, DANNY							

SECOND HALF SHOT CHART Produced by the KHSAA Sweet Sixteen Stat Crew with FINAL III - a Product of LEXICON SPORTS™



MALE					
Player			Player		Player
11 - WORDLOW, A	2 / 3	66.6%	20 - BIBB, DON	3 / 3	100.0%
50 - MARTIN, DA	0 / 2	0.0%	45 - BUNTON, B.	1 / 1	100.0%
25 - OSBORNE, J	3 / 7	42.8%			
22 - EDELEN, DA	0 / 2	0.0%			
32 - SHEE, DAVI	4 / 7	57.1%			
Layups	1-9 Ft	10-15 Ft	Over 15 Ft	3 Pointers	Total
4 / 4	2 / 8	2 / 5	2 / 2	3 / 6	13 / 25
100.0%	25.0%	40.0%	100.0%	50.0%	52.0%

SHELBY COUNTY					
Player			Player		Player
20 - McKNIGHT,	1 / 3	33.3%	12 - RICE, JASO	0 / 1	0.0%
24 - ALLEN, MON	0 / 4	0.0%			
42 - SIMONS, MA	3 / 4	75.0%			
14 - BURCHFIELD	3 / 10	30.0%			
22 - MOFFETT, J	2 / 6	33.3%			
Layups	1-9 Ft	10-15 Ft	Over 15 Ft	3 Pointers	Total
3 / 4	3 / 11	2 / 4	1 / 9	9 / 28	
75.0%	27.3%	50.0%	11.1%	32.1%	